

Plant Accession Application

Maintenance Manual

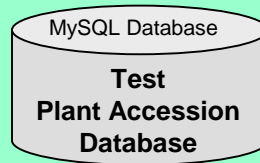
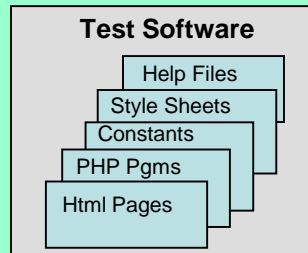
Accession Application Website Environment Overview

- Development and DB Administration performed on local PC
- DreamHost.com used as webserver to Internet users

Development Environment

PC Running Windows 10

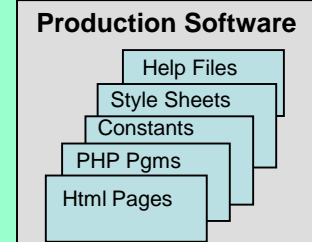
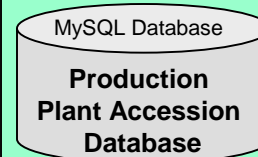
- Web Browsers
 - Firefox
 - Internet Explorer
- IIS Services Version 10
- PHP
- SQL Client (SQLyog)
- SQL Server (MySQL)
- FTP (AceFTP)
- Text Editor (Metapad & Notepad++)



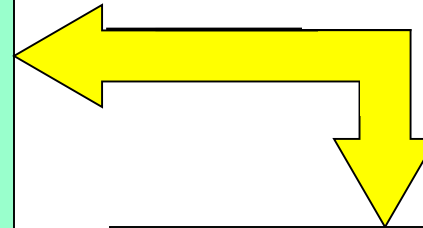
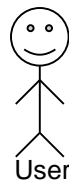
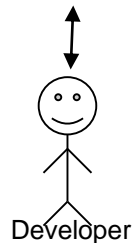
* Not required for this application

Production Environment DreamHost.com

- Hosts the application website
- DreamHost Happy Hosting Package:
 - Apache server
 - Linux*
 - MySQL
 - FTP
 - PHP
 - WordPress*
 - Let's Encrypt
 - Many others (See DreamHost.com)*

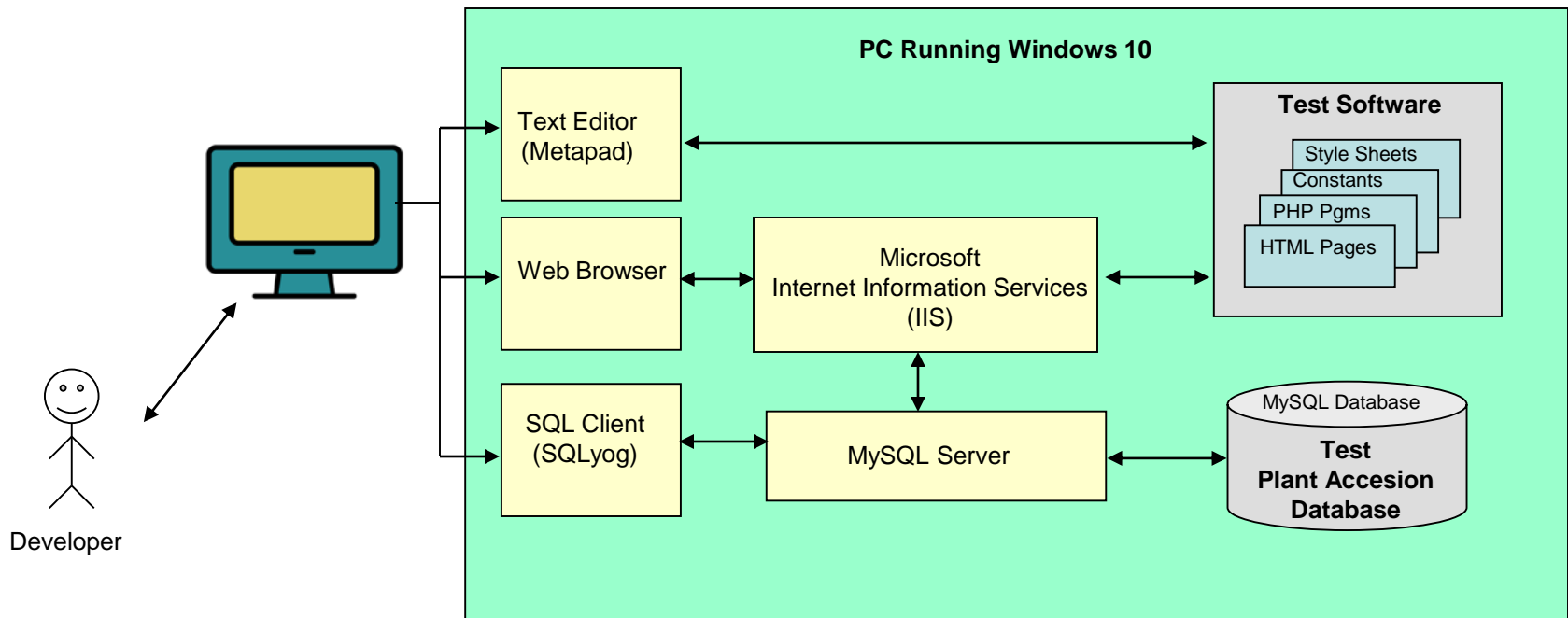


* Not required for this application



Accession Website Development Environment

- All development and testing occurs locally on the developer's PC
- Root node is "localhost"



Two Products used in local development environment

- AceFTP provides a GUI for FTP
- It can be used for moving files back and forth between the development environment and the web server.
- Other FTP packages similar to AceFTP can also be used.

About AceFTP Pro

AceFTP for Windows 2000/2003/XP/Vista
version 3 (3.80.3) - 6/20/2007

Copyright © 1996-2007 Visicom Media Inc.
AceFTP Pro © File Transfer Program

This software is registered to:
John Neorr

Visicom Media
www.visicommedia.com

AceFTP 3 Pro

**Powerful and Secure
File Transfer Solution**

Perform Secure File Transfers
with integrated SSL, password encryption, firewall support

Get Total Control Over Your File Transfers
with file transfer scheduling and queue management


Enhance Your Effectiveness
with advanced interface customization, image thumbnails and
server file searches

www.visicommedia.com/aceftp/

You have the latest version available.

OK

About SQLyog Enterprise

 SQLyog Community Edition- MySQL GUI
v6.07
<http://www.webyog.com>

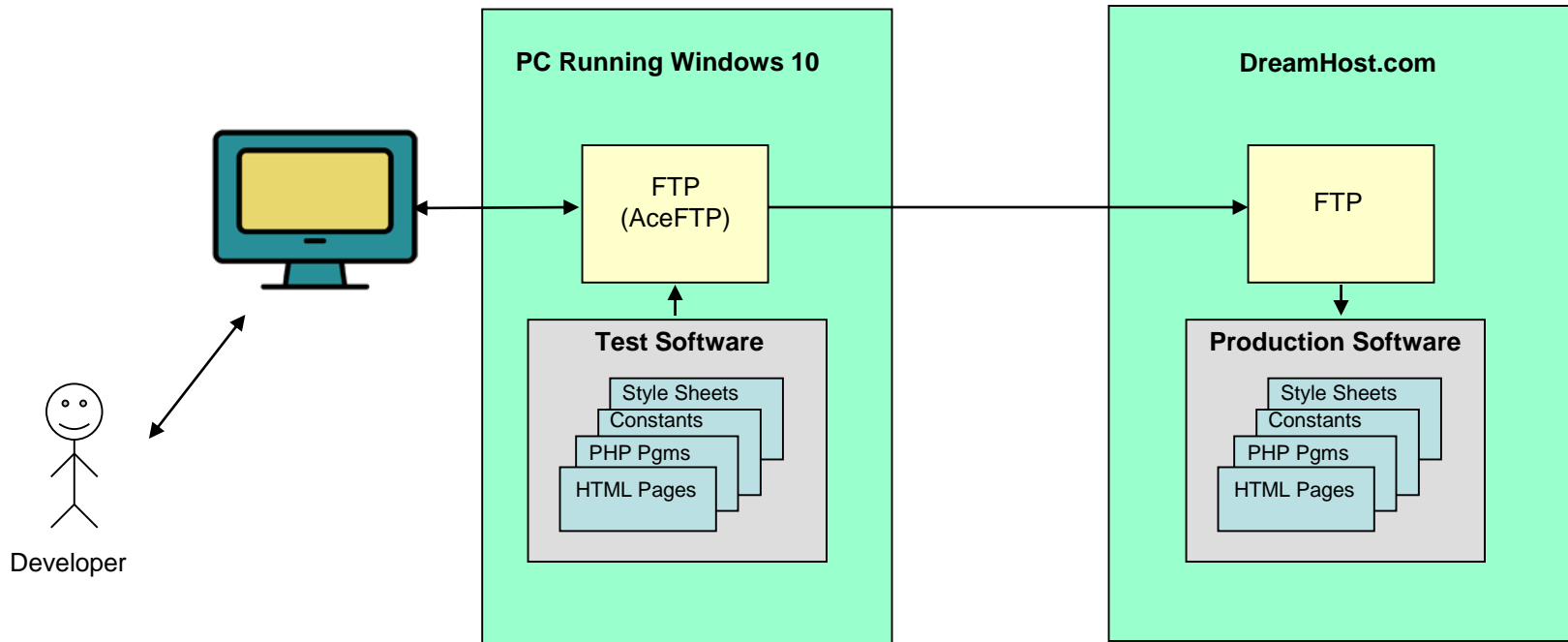
This software is released under the GNU General Public Licence(GPL), which is probably the best known Open Source licence. The formal terms of GPL licence can be found at <http://www.fsf.org/licence/>.

OK

- SQLyog is a client program which provides a GUI for maintaining your MySQL databases.
- It can connect to your local database, the database on WinHost, or to both at the same time.
- It provide facilities for backup and restore as well as maintaining db structure and data
- Other packages similar to SQLyog can also be used

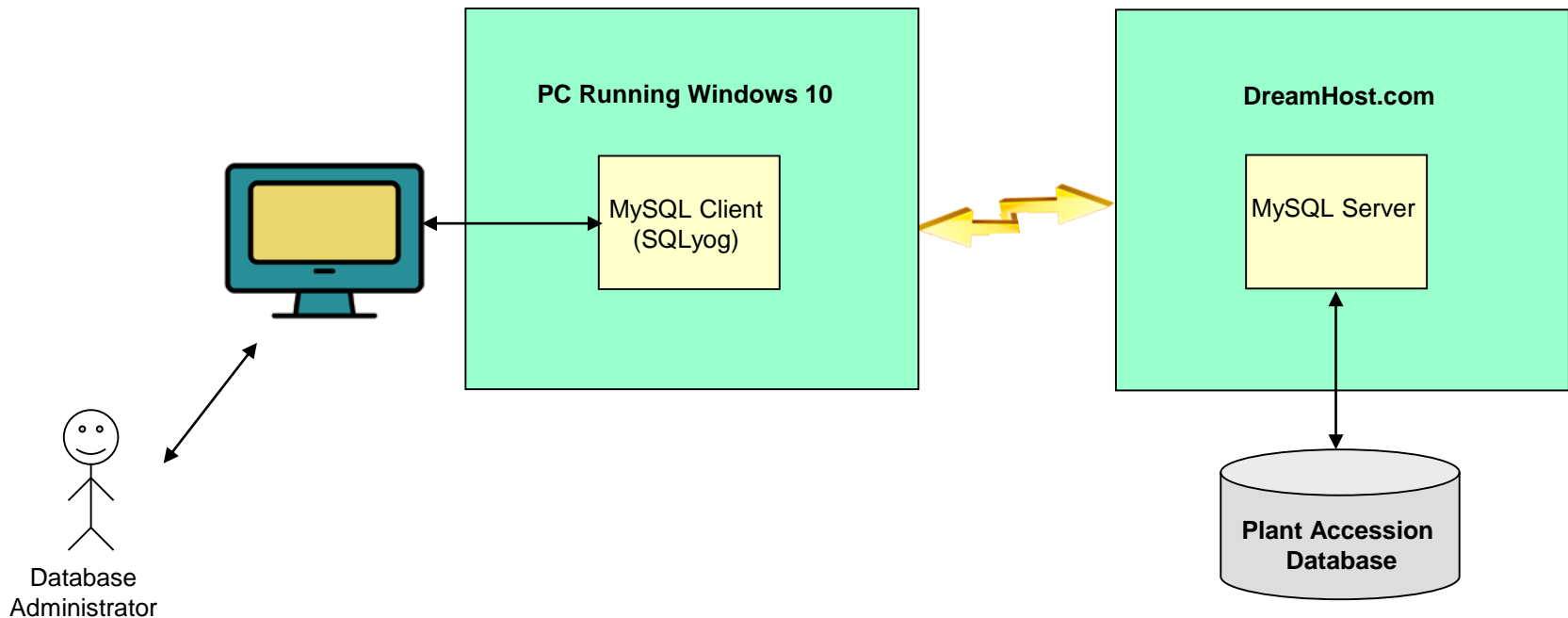
Updating the Accession Website

Once a change has been made and tested in the development environment, it is moved to the production environment where it becomes visible to the general public.



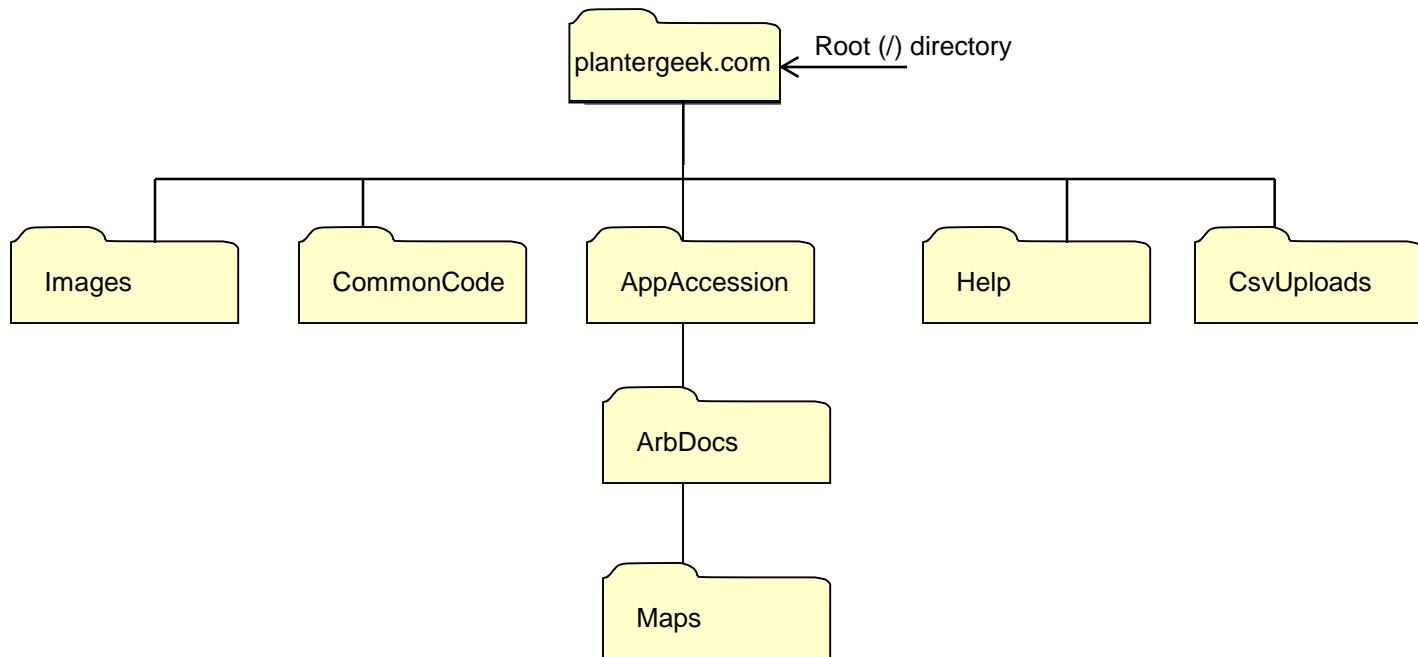
LWAF Database Administration Environment

- Database administration takes advantage of the MySQL Client/Server model.
- Database backups, mass changes and other ad-hoc operations are done using the “SQLyog” client on the PC which is connected to the MySQL server on WinHost.com.
- You can also use this same architecture to connect to the “localhost” server to do database administration on the local test database.

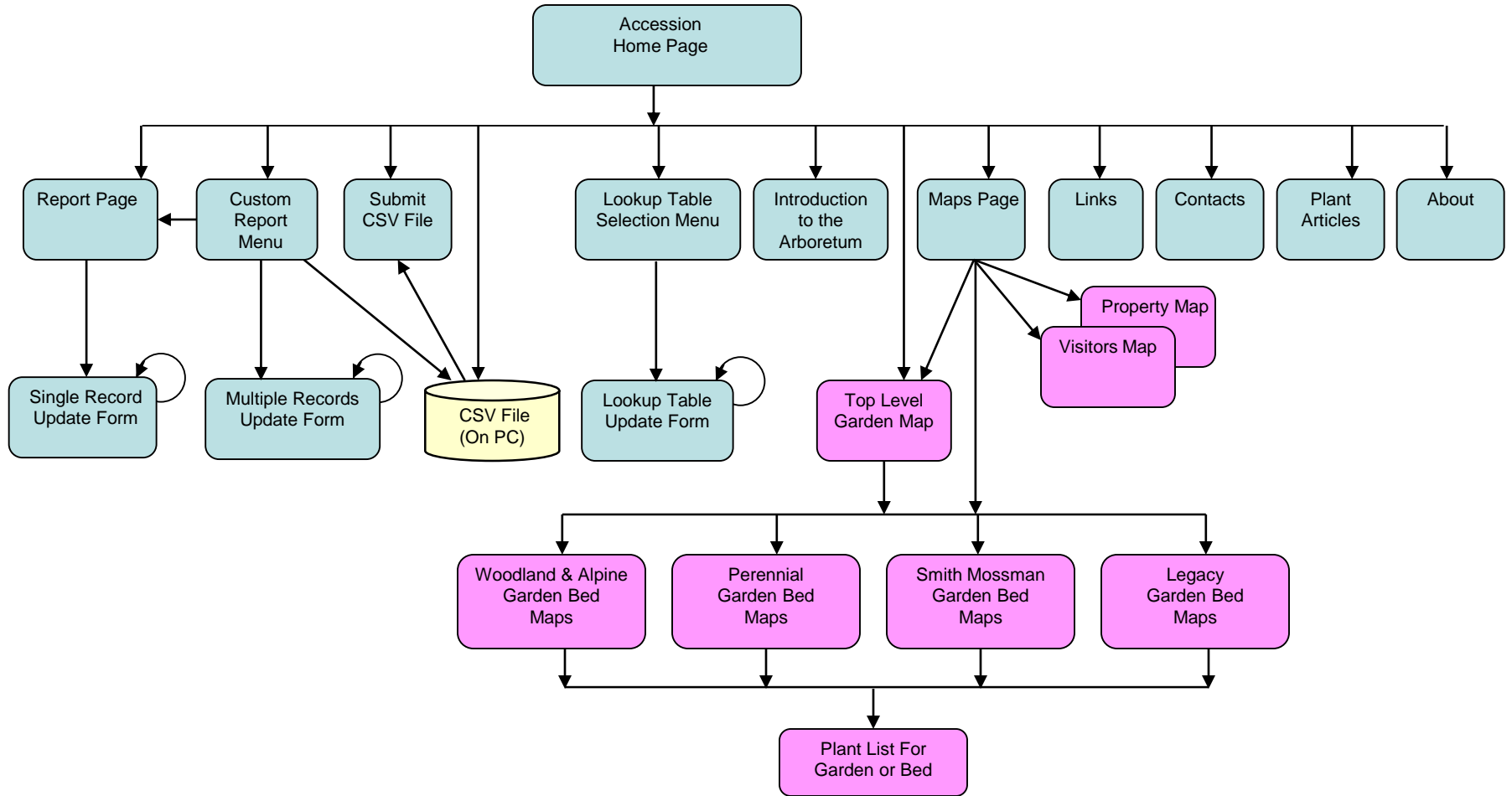


Accession Website Directory Structure

The directories shown below are those that contain accession website files.



Accession App Site Map



Note:

You can always go back to the Home Page or the Custom Report Menu from any regular window.

Legend:

Regular Window

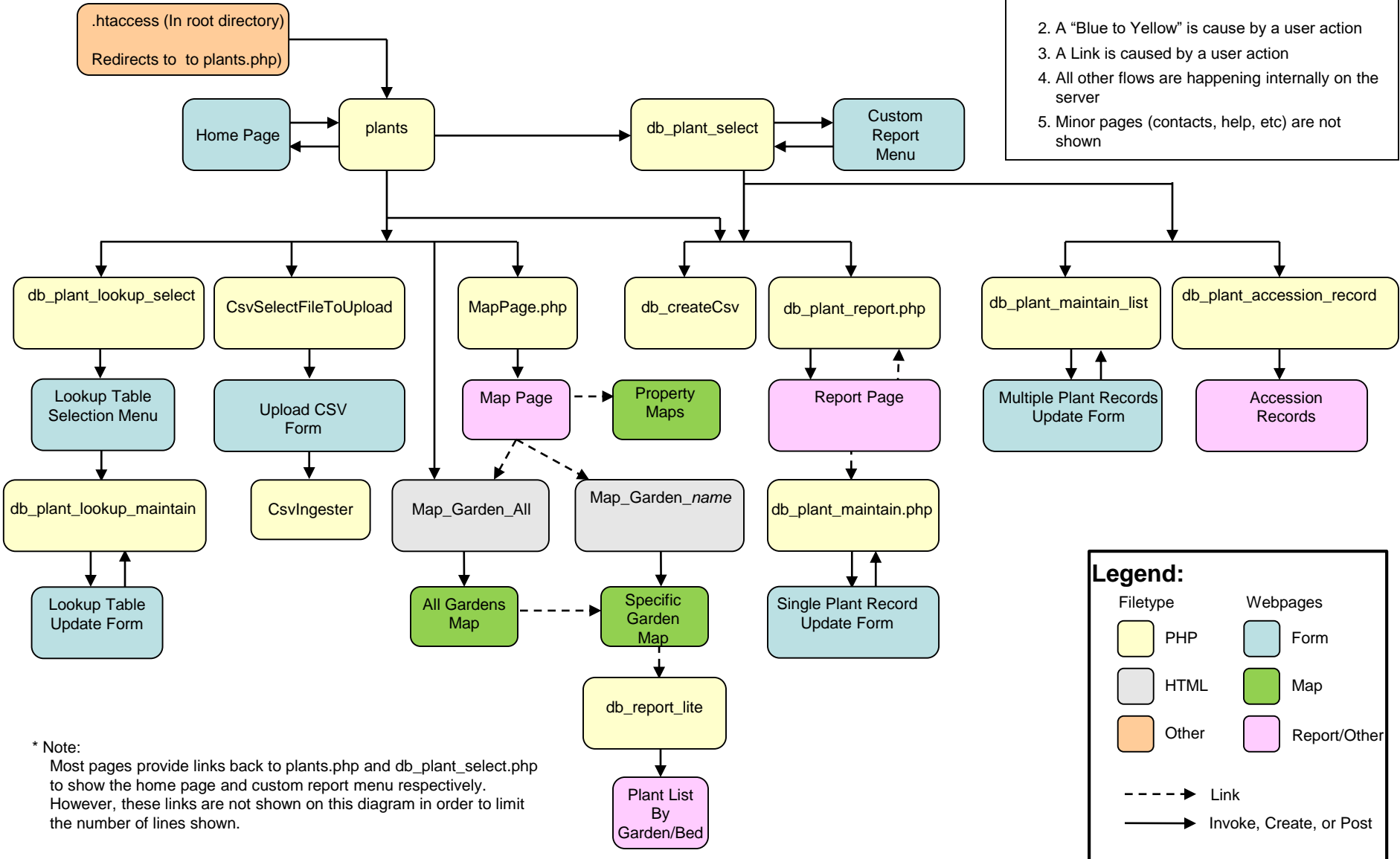
Pop-up Window

Accession Application Programs

- Accession App programs listed in “**AccessionAppPrograms.docx.**”
- This document is in the Accession App’s “Help” directory.
- List this directory via the Accession App’s dropdown “Help’ menu.

Program/Webpage Relationship

- This chart shows:
 - What programs create what pages or forms
 - What programs forms are posted to
 - What programs are triggered via links*
 - Program to program invocation on the server
- A "Blue to Yellow" is caused by a user action
- A Link is caused by a user action
- All other flows are happening internally on the server
- Minor pages (contacts, help, etc) are not shown



* Note:
 Most pages provide links back to plants.php and db_plant_select.php to show the home page and custom report menu respectively. However, these links are not shown on this diagram in order to limit the number of lines shown.

